

SCHEDULE				
PART	LOT	CON	PIN	AREA
1	PART OF LOT 29	3	PART OF 28186-0235(LT)	4047sq.m.
2	PART OF LOTS 28 AND 29			4047sq.m.

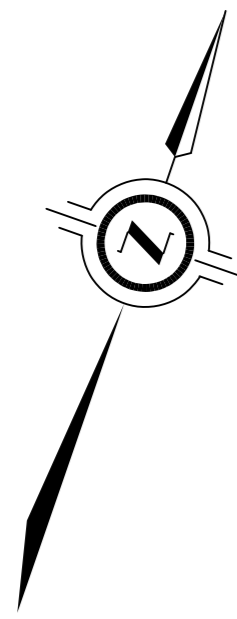
PLAN 45R-17389

Received and deposited

December 7th, 2022

Nicole Griffin

Representative for the
Land Registrar for the
Land Titles Division of
Peterborough (No.45)



STONY LAKE

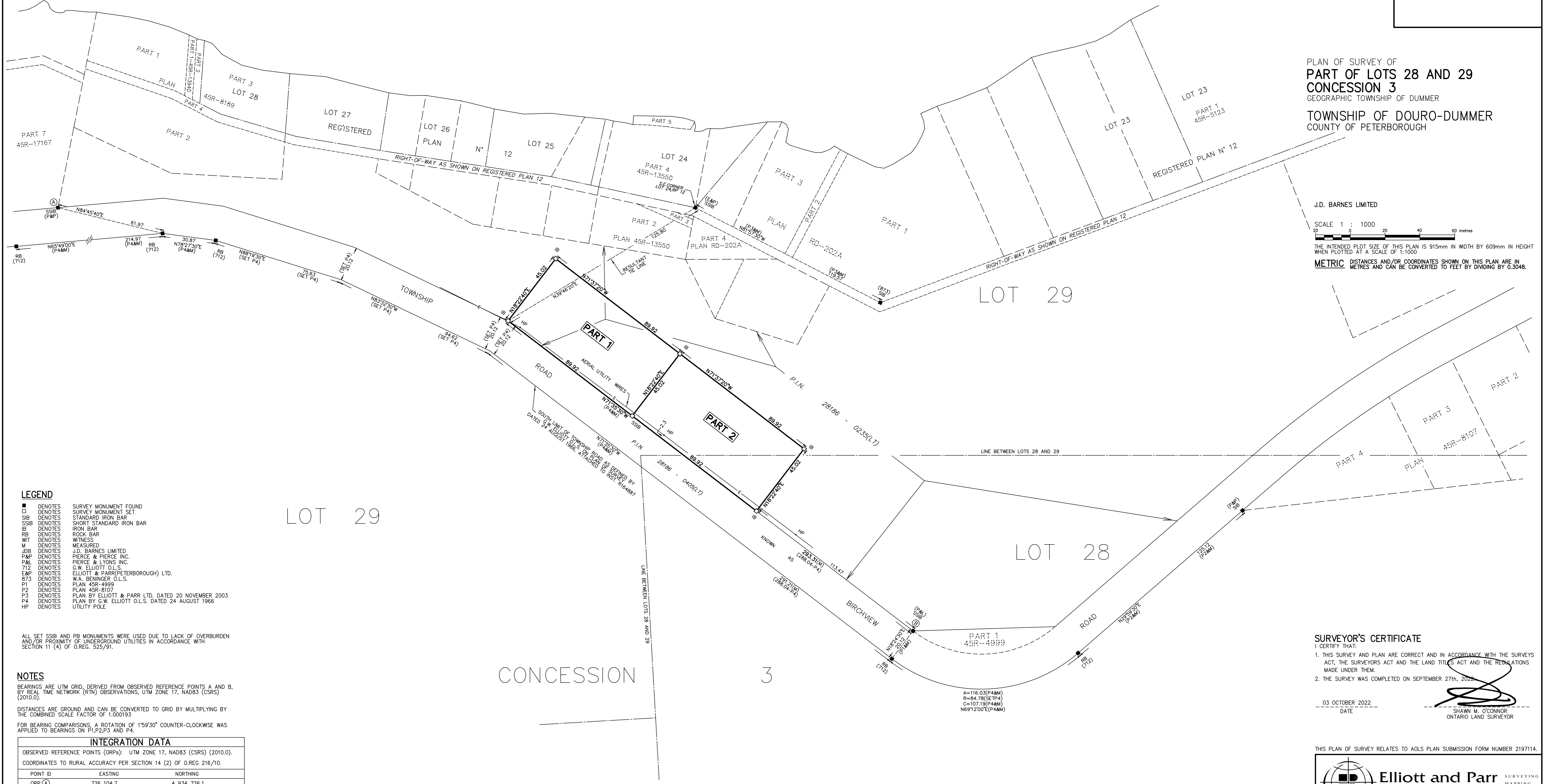
PLAN OF SURVEY OF
PART OF LOTS 28 AND 29
CONCESSION 3
GEOGRAPHIC TOWNSHIP OF DUMMER
TOWNSHIP OF DOURO-DUMMER
COUNTY OF PETERBOROUGH

J.D. BARNES LIMITED

SCALE 1 : 1000
0 20 40 60 metres

THE INTENDED PLOT SIZE OF THIS PLAN IS 915mm IN WIDTH BY 609mm IN HEIGHT WHEN PLOTTED AT A SCALE OF 1:1000

METRIC DISTANCES AND/OR COORDINATES SHOWN ON THIS PLAN ARE IN METRES AND CAN BE CONVERTED TO FEET BY DIVIDING BY 0.3048.



- LEGEND**
- DENOTES SURVEY MONUMENT FOUND
 - DENOTES SURVEY MONUMENT SET
 - SIB DENOTES STANDARD IRON BAR
 - SSIB DENOTES SHORT STANDARD IRON BAR
 - IB DENOTES IRON BAR
 - RB DENOTES ROCK BAR
 - WT DENOTES WITNESS
 - M DENOTES MEASURED
 - JDB DENOTES J.D. BARNES LIMITED
 - P&P DENOTES PIERCE & PIERCE INC.
 - P46 DENOTES PIERCE & LYONS INC.
 - 712 DENOTES G.W. ELLIOTT O.L.S.
 - E&P DENOTES ELLIOTT & PARR (PETERBOROUGH) LTD.
 - 873 DENOTES W.A. BENINGER O.L.S.
 - P1 DENOTES PLAN 45R-4999
 - P2 DENOTES PLAN 45R-8107
 - P3 DENOTES PLAN BY ELLIOTT & PARR LTD. DATED 20 NOVEMBER 2003
 - P4 DENOTES PLAN BY G.W. ELLIOTT O.L.S. DATED 24 AUGUST 1966
 - HP DENOTES UTILITY POLE

ALL SET SSB AND PB MONUMENTS WERE USED DUE TO LACK OF OVERBURDEN AND/OR PROXIMITY OF UNDERGROUND UTILITIES IN ACCORDANCE WITH SECTION 11 (4) OF O.REG. 525/91.

NOTES

BEARINGS ARE UTM GRID, DERIVED FROM OBSERVED REFERENCE POINTS A AND B, BY REAL TIME NETWORK (RTN) OBSERVATIONS, UTM ZONE 17, NAD83 (CSRS) (2010.0).

DISTANCES ARE GROUND AND CAN BE CONVERTED TO GRID BY MULTIPLYING BY THE COMBINED SCALE FACTOR OF 1.000193

FOR BEARING COMPARISONS, A ROTATION OF 1°59'30" COUNTER-CLOCKWISE WAS APPLIED TO BEARINGS ON P1, P2, P3 AND P4.

INTEGRATION DATA		
OBSERVED REFERENCE POINTS (ORPs): UTM ZONE 17, NAD83 (CSRS) (2010.0).		
COORDINATES TO RURAL ACCURACY PER SECTION 14 (2) OF O.REG 216/10.		
POINT ID	EASTING	NORTHING
ORP (A)	726 104.7	4 934 726.1
ORP (B)	726 648.9	4 934 656.7
COORDINATES CANNOT, IN THEMSELVES, BE USED TO RE-ESTABLISH CORNERS OR BOUNDARIES SHOWN ON THIS PLAN.		
THE RESULTANT TIE BETWEEN ORP (A) AND ORP (B) IS 548.6 N82°44'00"W		

SURVEYOR'S CERTIFICATE

I CERTIFY THAT:

- THIS SURVEY AND PLAN ARE CORRECT AND IN ACCORDANCE WITH THE SURVEYS ACT, THE SURVEYORS ACT AND THE LAND TITLES ACT AND THE REGULATIONS MADE UNDER THEM.
- THE SURVEY WAS COMPLETED ON SEPTEMBER 27th, 2022.

03 OCTOBER 2022
DATE

SHAWN M. O'CONNOR
ONTARIO LAND SURVEYOR

THIS PLAN OF SURVEY RELATES TO AOLS PLAN SUBMISSION FORM NUMBER 2197114.

Elliott and Parr
(PETERBOROUGH)
A Division of J.D. Barnes Limited
211 SHERBROOKE ST PETERBOROUGH, ON K9J 2N2
T: (705) 745-8444 F: (705) 745-5314 www.jdbarnes.com

DRAWN BY: AR	CHECKED BY: SMO	REFERENCE NO.: 22-19-266-00
PLOTTED: 11/29/2022		FILE: DWR 3-29 DATED: 03/10/2022