

SITE PLAN
 PART OF LOTS 14, 15 AND 16,
 REGISTERED PLAN N° 6
 GEOGRAPHIC TOWNSHIP OF DUMMER
 TOWNSHIP OF DOURO-DUMMER
 COUNTY OF PETERBOROUGH

ELLIOTT AND PARR (PETERBOROUGH) LTD.

SCALE: 1 : 500

18 AUGUST 2023

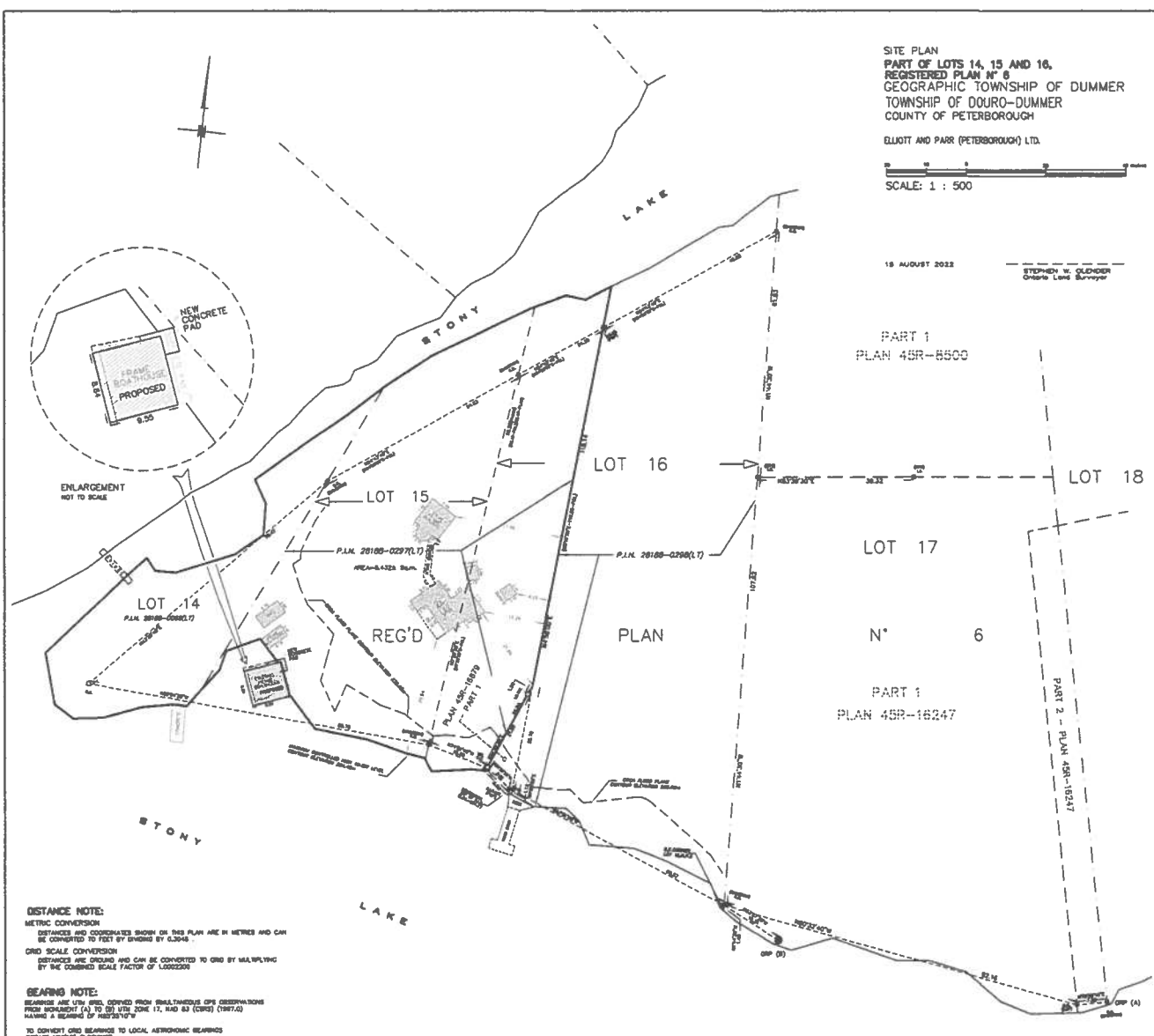
STEPHEN W. OLSDOR
 Ontario Land Surveyor

PART 1
 PLAN 45R-8500

LOT 17
 LOT 18
 LOT 16
 LOT 15
 LOT 14
 PLAN N° 6

PART 1
 PLAN 45R-16247

PART 2 - PLAN 45R-16247



DISTANCE NOTE:
 METRIC CONVERSION
 DISTANCES AND COORDINATES SHOWN ON THIS PLAN ARE IN METRES AND CAN BE CONVERTED TO FEET BY DIVIDING BY 0.3048
 GRID SCALE CONVERSION
 DISTANCES ARE DRAWING AND CAN BE CONVERTED TO GRID BY MULTIPLYING BY THE CORRECTED SCALE FACTOR OF 1.0002200

BEARING NOTE:
 BEARINGS ARE TRUE AND DERIVED FROM MULTITUDEOUS GPS OBSERVATIONS FROM MONUMENT (A) TO (D) UTM ZONE 17, MAG 83 (CORS) (1987.0), HAVING A BEARING OF 88°25'10" W
 TO CONVERT GRID BEARINGS TO LOCAL ASTRONOMICAL BEARINGS ROTATE 118°17' CLOCKWISE

INTERGRATION DATA:

POINT ID	COUNTRY	EASTING	NORTHING
OSP (A)	4637746.78	720076.87	
OSP (B)	4637746.34	720083.25	

COORDINATES CANNOT, IN INDIVIDUAL, BE USED TO RE-ESTABLISH CORNERS OR MONUMENTS SHOWN ON THIS PLAN.

LEGEND & NOTES:

- - CORNER SURVEY MONUMENT, FOUND
- - CORNER SURVEY MONUMENT, SET
- (MSP) - CORNER ELLIOTT AND PARR, G.L.S.
- (STC) - CORNER S.W.A. BENEVOLE G.L.S.
- (MSP) - CORNER PIERCE AND PIERCE, G.L.S.
- (CORNER) - CORNER S.W.A. GARDNER P.A.S.
- MIT - CORNER WITNESS
- PLAN - CORNER REGISTERED PLAN N° 6
- (P.M.) - CORNER PLAN BY PIERCE AND LYONS G.L.S. DATED 27 NOVEMBER 1987

NOTE:
 STORY LAKE IS ARTIFICIALLY CONTROLLED BY THE WEST CANAL, SUPPLIED BY A DAM AT THE OUTLET OF CLEAR LAKE IN LOT 37, COUNCDENON 13, TOWNSHIP OF BURLA
 MAXIMUM CONTROLLED LEVEL IS ELEVATION 234.45m
 MINIMUM CONTROLLED LEVEL IS ELEVATION 234.10m
 ELEVATIONS ARE GEODETIC, DERIVED FROM WEST CANAL MONUMENTS CONSISTING OF A BRASS GROUND HYDRO SURVEY MONUMENT SET ON TOP OF CONCRETE RETAINING WALL ON NORTH END OF DAM, ELEVATION 233.96m

Elliott and Parr (PETERBOROUGH) LTD.
 310 BARRACLOUGH ST. PETERBOROUGH ON K2J 7K3
 T (705) 748-8444 F (705) 748-8274 www.elliottandparr.com

DATE BY: AS / SW	CHECKED BY: SAC	REFERENCE NO.: 22-19-072-00
FILE: 624 6-33	DATE: 08/18/2023	PLANNED TO ADJUST 902