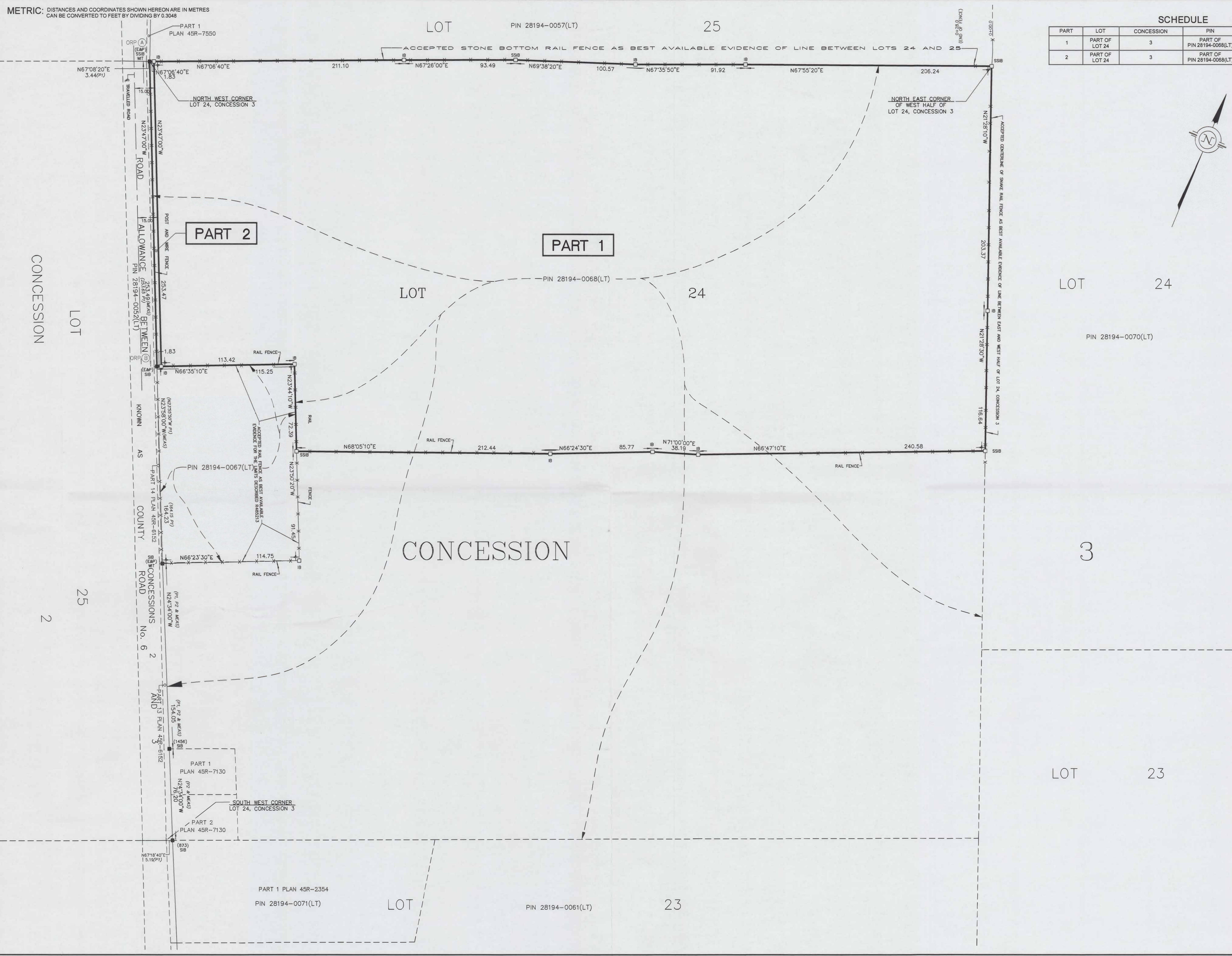


METRIC: DISTANCES AND COORDINATES SHOWN HEREON ARE IN METRES
CAN BE CONVERTED TO FEET BY DIVIDING BY 0.3048



SCHEDULE				
PART	LOT	CONCESSION	PIN	AREA
1	PART OF LOT 24	3	PART OF PIN 28194-0068(LT)	21.78 Ha.
2	PART OF LOT 24	3	PART OF PIN 28194-0068(LT)	463.8 Sq.m.

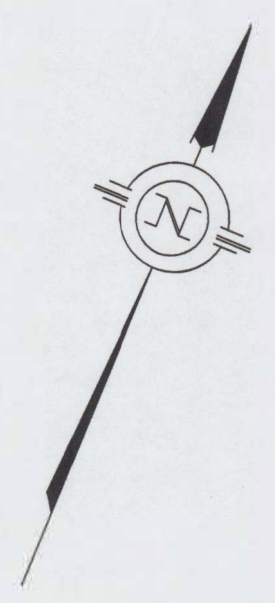
PLAN 45R-17531

Received and deposited

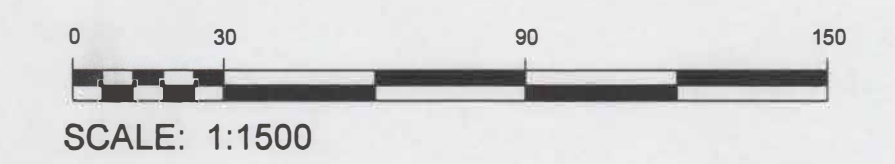
August 25th, 2023

Allison Turner

Representative for the
Land Registrar for the
Land Titles Division of
Peterborough (No.45)



PLAN OF SURVEY OF
PART OF LOT 24
CONCESSION 3
GEOGRAPHIC TOWNSHIP OF DUMMER
TOWNSHIP OF DOURO-DUMMER
COUNTY OF PETERBOROUGH



SCALE: 1:1500

THE INTENDED PLOT SIZE OF THIS PLAN IS 860mm IN WIDTH BY 560mm IN HEIGHT
WHEN PLOTTED AT A SCALE OF 1:1500

SURVEYOR'S CERTIFICATE

- I CERTIFY THAT:
- THIS SURVEY AND PLAN ARE CORRECT AND ARE IN ACCORDANCE WITH THE SURVEYS ACT, THE SURVEYORS ACT AND THE LAND TITLES ACT AND THE REGULATIONS MADE UNDER THEM.
 - THE SURVEY WAS COMPLETED ON 16 JUNE, 2023

SIGNED AT LAKEFIELD, ONTARIO
THIS 26TH DAY OF JUNE, 2023

Christopher E. Musclow
CHRISTOPHER E. MUSCLOW
ONTARIO LAND SURVEYOR

THIS PLAN OF SURVEY IS RELATED TO AOLS PLAN SUBMISSION FORM NUMBER V-4976

LEGEND

- DENOTES SURVEY MONUMENT FOUND
- DENOTES SURVEY MONUMENT PLANTED
- WIT. DENOTES WITNESS
- 1456 DENOTES D.M. ROBERTSON, O.L.S.
- 873 DENOTES W.A. BENINGER, O.L.S.
- E&P DENOTES ELLIOTT & PARR, O.L.S.
- P1 DENOTES PLAN 45R-6152
- P2 DENOTES PLAN 45R-7130

BEARINGS SHOWN HEREON ARE UTM GRID, DERIVED FROM REAL TIME NETWORK (RTN) OBSERVATIONS ON POINTS A AND B LISTED HEREON AND ARE REFERRED TO THE CENTRAL MERIDIAN OF UTM ZONE 17 (81° WEST LONGITUDE) NAD 83 (CSRS EPOCH 2010.0).

FOR BEARING COMPARISONS, A ROTATION OF 1°53'30" COUNTER CLOCKWISE WAS APPLIED TO BEARINGS SHOWN ON P1

DISTANCES SHOWN HEREON ARE GROUND DISTANCES AND CAN BE USED TO COMPUTE GRID DISTANCES BY MULTIPLYING BY A COMBINED SCALE FACTOR OF 1.00019242

INTEGRATION DATA

COORDINATES ARE DERIVED FROM GPS RTK OBSERVATIONS USING THE SMARTNET CORRECTION DATA AND ARE REFERRED TO UTM ZONE 17 (81°W LONGITUDE) NAD83 (CSRS EPOCH 2010.0).

OBSERVED REFERENCE POINT (ORP) COORDINATE VALUES ARE TO 'RURAL' ACCURACY SPECIFICATION IN ACCORDANCE WITH SEC. 14(2) OF O.REG. 216/10

POINT	UTM NORTHING	UTM EASTING
ORP (A)	4931953.70	726956.48
ORP (B)	4931721.74	726958.70

CAUTION: COORDINATES CANNOT, IN THEMSELVES, BE USED TO RE-ESTABLISH CORNERS OR BOUNDARIES SHOWN ON THIS PLAN.



JBF SURVEYORS
3177 LAKEFIELD ROAD, BOX 70
LAKEFIELD, ON K0L 2H0
PHONE: 705-652-6198
INFO@JBF SURVEYORS.COM
WWW.JBF SURVEYORS.COM
PROJ. # 8878_RP