

STONY LAKE

PART 1 -
SURVEYOR'S REAL PROPERTY REPORT

**PLAN OF SURVEY OF
LOTS 9, 10 AND 11, REGISTERED PLAN No. 15
PART OF LOT 32, CONCESSION 9
GEOGRAPHIC TOWNSHIP OF DUMMER
TOWNSHIP OF DOURO-DUMMER
COUNTY OF PETERBOROUGH**

0 5 15 25
SCALE: 1:250

PART 2 - REPORT SUMMARY

THIS PLAN HAS BEEN PREPARED FOR THE USE OF:
AARON GOLDSTEIN, CHRISTINA LAING, 2509448 ONTARIO INC.

REGISTERED EASEMENTS AND/OR RIGHTS OF WAY:
PIN 28190-0261(LT) - TOGETHER WITH AN EASEMENT OVER LANDS DESCRIBED IN R372425 (PARTIALLY RELEASED UNDER P169970)
PIN 28190-018(LT) - TOGETHER WITH AN EASEMENT OVER LANDS DESCRIBED IN R374752
PIN 28190-012(LT) - TOGETHER WITH AN EASEMENT OVER LANDS DESCRIBED IN R352728, EXCEPT THE EASEMENT THEREIN RE: PT 4 & 5, 45R3385 & PT 7, 45R3753
PIN 28190-015(LT) - TOGETHER WITH AN EASEMENT OVER LANDS DESCRIBED IN R352728, EXCEPT THE EASEMENT THEREIN RE: PARTS 4 & 5, 45R3385 & PART 7, 45R3753, TOGETHER WITH AN EASEMENT OVER PARTS 21, 22 & 23, 45R16723 AS IN P233110; TOGETHER WITH AN EASEMENT OVER PARTS 21, 22 & 23, 45R16723 AND PART 1, 45R3385 AND PART 7, 45R3753
PIN 28190-013(LT) - TOGETHER WITH AN EASEMENT OVER LANDS DESCRIBED IN R352728, EXCEPT THE EASEMENT THEREIN RE: PTS 4 & 5, 45R3385 & PT 7, 45R3753
PIN 28190-012(LT) - TOGETHER WITH AN EASEMENT OVER LANDS DESCRIBED IN R352728, EXCEPT THE EASEMENT THEREIN RE: PT 4 & 5, 45R3385 & PT 7, 45R3753, TOGETHER WITH AN EASEMENT OVER PARTS 21, 22 & 23, 45R16723 AS IN P233110; TOGETHER WITH AN EASEMENT OVER PARTS 21, 22 & 23, 45R16723 AND PART 1, 45R3385 AND PART 7, 45R3753
PIN 28190-015(LT) - TOGETHER WITH AN EASEMENT OVER LANDS DESCRIBED IN R424014 EXCEPT THE EASEMENT THEREIN RE: PARTS 4 & 5 AND PLAN 45R3385 AND PART 7, 45R3753; TOGETHER WITH AN EASEMENT OVER PARTS 21, 22 & 23, 45R16723 AS IN P233110; TOGETHER WITH AN EASEMENT OVER PARTS 21, 22 & 23, 45R16723 AND PART 1, 45R3385 AND PART 7, 45R3753
PIN 28190-013(LT) - TOGETHER WITH AN EASEMENT OVER LANDS DESCRIBED IN R352728, EXCEPT THE EASEMENT THEREIN RE: PT 4 & 5, 45R3385 & PT 7, 45R3753, TOGETHER WITH AN EASEMENT OVER PARTS 21, 22 & 23, 45R16723 AS IN P233110; TOGETHER WITH AN EASEMENT OVER PARTS 21, 22 & 23, 45R16723 AND PART 1, 45R3385 AND PART 7, 45R3753
PIN 28190-012(LT) - TOGETHER WITH AN EASEMENT OVER LANDS DESCRIBED IN R352728, EXCEPT THE EASEMENT THEREIN RE: PT 4 & 5, 45R3385 & PT 7, 45R3753, TOGETHER WITH AN EASEMENT OVER PARTS 21, 22 & 23, 45R16723 AS IN P233110; TOGETHER WITH AN EASEMENT OVER PARTS 21, 22 & 23, 45R16723 AND PART 1, 45R3385 AND PART 7, 45R3753

NOTABLE FEATURES:
NONE
COMPLIANCE WITH MUNICIPAL ZONING BY-LAWS:
NOT CERTIFIED BY THIS REPORT

SURVEYOR'S CERTIFICATE

I CERTIFY THAT:
1) THIS SURVEY AND PLAN ARE CORRECT AND ARE IN ACCORDANCE WITH THE SURVEY ACT, THE SURVEYORS ACT AND THE LAND TITLES ACT AND THE REGULATIONS MADE UNDER THEM
2) THE SURVEY WAS COMPLETED ON 19 MARCH, 2025

SIGNED AT LAKEFIELD, ONTARIO
THIS 19th DAY OF APRIL, 2025

Christopher J. Muscolow
CHRISTOPHER J. MUSCOW
ONTARIO LAND SURVEYOR

LEGEND

- DENOTES SURVEY MONUMENT FOUND
- DENOTES SURVEY MONUMENT PLANTED
- WIT DENOTES WITNESS
- SIB DENOTES STANDARD IRON BAR
- SIBS DENOTES SHORT STANDARD IRON BAR
- IB DENOTES IRON BAR
- RIB DENOTES ROUND IRON BAR
- CP DENOTES COLLARED POINT
- CC DENOTES CUT CROSS
- M DENOTES MEASURED
- P&P DENOTES PIERCE & PIERCE O.L.S.
- J&F DENOTES J.B.F. SURVEYORS O.L.S.
- 123 DENOTES G.F. JONES O.L.S.
- 1847 DENOTES I.B. FLEISHEL O.L.S.
- O.U. DENOTES ORIGIN UNKNOWN
- CGVD(28)78 DENOTES CANADIAN GEODETIC VERTICAL DATUM OF 1928 1978 ADJUSTMENT
- P1 DENOTES DENOTES PLAN 45R-8753
- P2 DENOTES DENOTES PLAN 45R-16723
- P3 DENOTES DENOTES PLAN 45R-16871
- P4 DENOTES DENOTES PLAN 45R-15695

BEARINGS SHOWN HEREON ARE UTM GRID, DERIVED FROM PRECISE POINT POSITIONING SERVICE (PPP) OBSERVATIONS ON POINTS A AND B LISTED HEREON AND ARE REFERRED TO THE CENTRAL MERIDIAN OF UTM ZONE 17 (81° WEST LONGITUDE) NAD 83 (CSRS EPOCH 1997.0).

FOR BEARING COMPARISONS, A ROTATION OF 2°06'42" COUNTER CLOCKWISE WAS APPLIED TO BEARINGS SHOWN ON PLAN OF SURVEY BY BENINGER SURVEYING LTD., O.L.S. DATED 31 AUGUST 2010.

A ROTATION OF 2°06'50" COUNTER CLOCKWISE WAS APPLIED TO BEARINGS SHOWN ON P1.

DISTANCES SHOWN HEREON ARE GROUND DISTANCES AND CAN BE USED TO COMPUTE GRID DISTANCES BY MULTIPLYING BY A COMBINED SCALE FACTOR OF 1.0002856

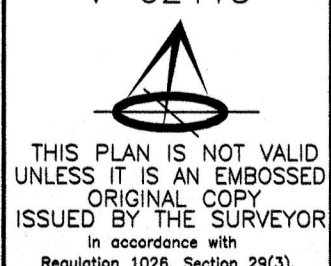
INTEGRATION DATA

COORDINATES ARE DERIVED FROM GPS RTK OBSERVATIONS USING THE SMARTNET CORRECTION DATA AND ARE REFERRED TO UTM ZONE 17 (81°W LONGITUDE) NAD83 (CSRS EPOCH 2010.0).
OBSERVED REFERENCE POINT (ORP) COORDINATE VALUES ARE TO 'RURAL' ACCURACY SPECIFICATION IN ACCORDANCE WITH SEC. 14(2) OF O. REG. 218/10

POINT	UTM NORTHING	UTM EASTING
ORP (P)	463955.95	733422.59
ORP (Q)	463975.48	733454.54

CAUTION: COORDINATES CANNOT, IN THEMSELVES, BE USED TO RE-ESTABLISH CORNERS OR BOUNDARIES SHOWN ON THIS PLAN.

ASSOCIATION OF ONTARIO
LAND SURVEYORS
PLAN SUBMISSION FORM
V-62415



JBF SURVEYORS
3177 LAKEFIELD ROAD, BOX 70
LAKEFIELD, ON K0L 2H0
PHONE: 705-852-5158
INFO@JBF.SURVEYORS.COM
WWW.JBF.SURVEYORS.COM
PROJ. # 9605

WATER'S EDGE COORDINATE TABLE

POINT NO.	NORTHING	EASTING
1457	493890.92	733391.29
1503	493870.97	733389.23
2000	4939873.99	733411.84
2001	4939873.94	733412.89
2002	4939874.15	733414.89
2003	4939877.87	733418.83
2004	4939882.55	733425.75
2005	4939886.62	733429.02
2006	4939889.64	733429.87
2007	4939893.44	733432.01
2008	4939895.05	733432.05
2009	4939896.89	733431.10
2010	4939709.00	733445.15
2011	4939713.27	733451.05
2012	4939723.49	733447.40
2013	4939724.55	733450.80
2014	4939712.44	733455.09
2016	4939713.27	733457.59
2016	4939714.61	733457.13
2017	4939716.51	733462.52
2018	4939721.13	733460.93
2019	4939737.46	733468.78
2020	4939733.74	733468.73
2021	4939733.31	733505.06
2100	4939880.06	733432.23
2101	4939881.86	733432.76
2102	4939882.31	733430.99
2103	4939880.89	733399.06
2104	4939882.54	733398.70
2105	4939885.58	733394.09
2106	4939888.97	733392.04
2107	4939703.15	733348.48
2108	4939701.73	733348.07
2109	4939699.72	733343.24
2110	4939700.16	733342.48
2111	4939701.61	733378.77
2112	4939701.05	733377.31
2113	4939700.99	733375.05
2114	4939701.94	733369.73
2115	4939702.98	733369.30
2116	4939704.41	733366.22
2117	4939702.19	733365.59
2118	4939700.14	733363.28
2119	4939697.83	733360.02
2120	4939694.44	733358.82
2121	4939693.44	733356.54
2122	4939693.55	733351.92
2123	4939691.38	733352.52
2124	4939689.86	733350.91
2125	4939682.67	733348.01
2126	4939685.93	733346.40
2127	4939684.22	733343.85
2128	4939683.84	733343.58
2129	4939686.87	733334.81
2130	4939686.49	733332.38
2131	4939687.57	733330.66
2132	4939689.04	733329.76
2133	4939691.74	733329.24
2134	4939691.84	733327.70
2135	4939692.86	733324.98

NOTE: NO PERSON MAY COPY, REPRODUCE, DISTRIBUTE OR ALTER THIS PLAN IN WHOLE OR IN PART WITHOUT THE WRITTEN PERMISSION OF JBF SURVEYORS.
© JBF SURVEYORS 2025

WATER NOTE:

STONY LAKE
THE ELEVATION OF STONY LAKE IS ARTIFICIALLY REGULATED BY THE TRENT SEVERN WATERWAY - PARKS CANADA. ELEVATIONS ARE GEODETIC AND ARE REFERRED TO A TSV BENCHMARK, BEING A BRASS MONUMENT SET IN THE TOP OF THE CONCRETE RETAINING WALL ON THE NORTH END OF THE DAM AT THE OUTLET OF CLEAR LAKE IN THE HAULET OF YOUNG'S POINT. ELEVATION = 235.86 CGVD(28)78
MAXIMUM CONTROLLED WATER'S EDGE - CONTOUR ELEVATION = 234.42 CGVD(28)78

